

Administrative Breakout





Illinois State Board of Education

James T. Meeks, Chairman

Tony Smith, Ph.D., State Superintendent of Education



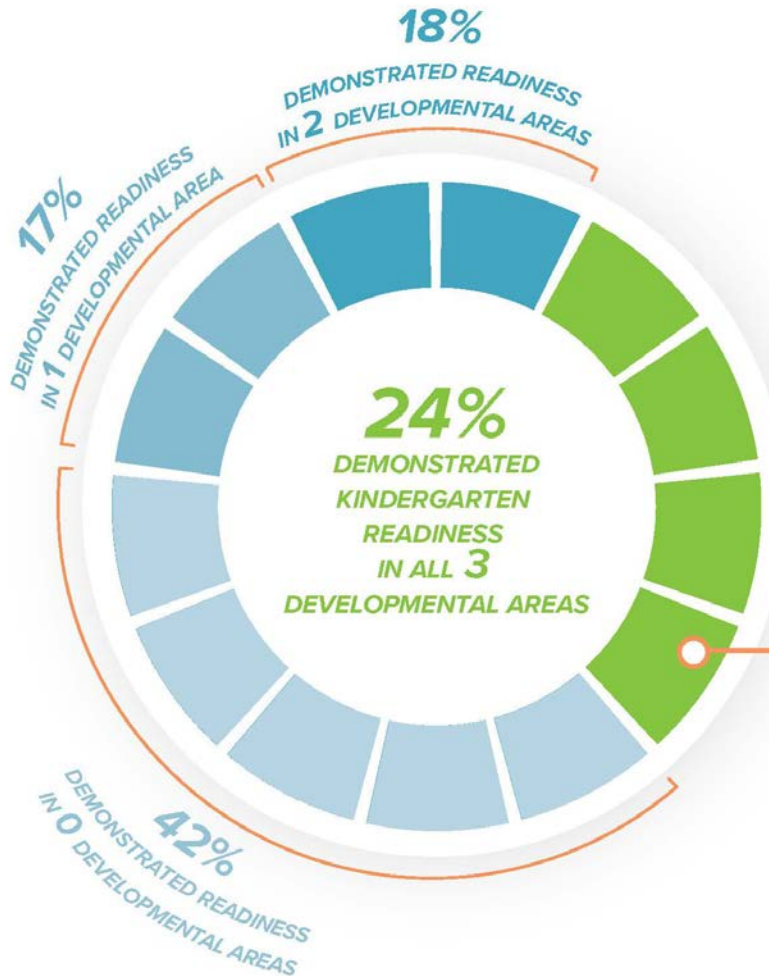
**Governor's Office of
Early Childhood Development**

2017 KIDS Data



Kindergarten Individual Development Survey
Every Illinois Child Ready for Kindergarten

81% of Kindergarteners in 2017 were observed (132,378)



Readiness data reflects students rated within the first 40 days of school on the required 14 State Kindergarten Readiness Measures

Students who demonstrated readiness showed the skills, knowledge and behaviors in three developmental areas:

- Math**
- Language & Literacy**
- Social & Emotional Development**

Percent of Students who Demonstrated Kindergarten Readiness by Developmental Area

Social & Emotional Development

49%

Language & Literacy

44%

Math

30%

www.isbe.net/KIDS

KIDS Data – State Use

Illinois is using KIDS to measure children's current development to learn in a kindergarten classroom and gauge school readiness.

KIDS will assist the state in making well-informed decisions about state programs, policies, and resource allocations.

- KIDS offers a consistent way to measure developmental readiness across the state;
- KIDS assists in identifying strengths and challenges in early childhood development at the district and state level;
- KIDS will provide a way to pinpoint and replicate best practices and areas of need.

Preliminary Fall 2018 Data:

- Over 123,000 Students Assessed
 - Versus 106,000 2017
- Preparing to release data to districts planned for mid-March
 - Materials for supporting local release
 - Community, families, media
 - Use with current kindergarten students
 - Encourage second data collection to gauge developmental progress
- Statewide Report planned release in June
 - Align with Spring Data Collection

Using KIDS Data Locally

- Build a common understanding & language around kindergarten readiness
- Dig into the data - Start or further conversations
 - Are we serving all of our children well?
- Consider why we should be worried about this?
 - Identify areas for improvement and guide your work
- Examine KIDS data in conjunction with other data sources
- Streamline Assessments
- Tailor messages to different audiences and rally people to your cause
 - Make sure a variety of stakeholders are at table

Crosswalk of Common Assessments



5 Readiness Domains

Required 14 State Readiness Measures

**KIDS
Measure**

**Illinois Early
Learning
and
Development
Standards
(IELDS)**

**Works
Sampling
System, 5th
Edition
Performance
Indicators
for
Preschool-4**

**Teaching
Strategies
GOLD
Objectives,
Dimensions,
and
Indicators**

**Early
Learning
Scale
Item,
Strand, and
Indicators 4-
5**

More Information & Resources

- KIDS website: <https://www.isbe.net/KIDS>
- Data Playbook: <https://www.schusterman.org/playbooks/data/>
- Illinois Early Childhood Asset Map (IECAM): <https://iecam.illinois.edu/>
- Chapin Hall (Chicago Only): <http://dfss-ecsd.chapinhall.org/>
- Census: <https://factfinder.census.gov/faces/nav/jsf/pages/index.xhtml>

Roundtable Discussions Identified Topics

1	Staff recruitment and evaluation	6	Reflective Supervision
2	Absenteeism	7	Expanding capacity
3	Problem solving in small districts	8	Creative use of resources
4	Engaging Families in family/school goal setting	9	Implementing Play-based Learning
5	Connecting teachers and Parent Educators	10	Using KIDS Data

Discussion Starters



An announcement will be made at the 20 minute mark to allow participants (if desired) to switch topics

Please record notes from your table's conversation!

- **Share Success**
- **Connect Around Challenges**
- **Share Resources**