

# ***Developing a Community School Model Through Partnerships and Comprehensive Services***

Dr. James Stelter, Superintendent, Bensenville School District 2

Christy Poli, LCSW, I/ECMH-C, Bensenville School District 2

Marianne Pokorny, LPC, YWCA

# Presentation Overview

- Goal: Identify strategies to support the Birth to Third Grade Continuum through the Implementation of Comprehensive Services.
- Objective
  - Foundational Steps towards Community School Model
  - Identifying Comprehensive Services
  - Overcoming Challenges of Implementation

# Who's in the Room

- Program Coordinators
- Early Childhood Directors
- Home Visitors
- SPED Directors

Who's in the room...

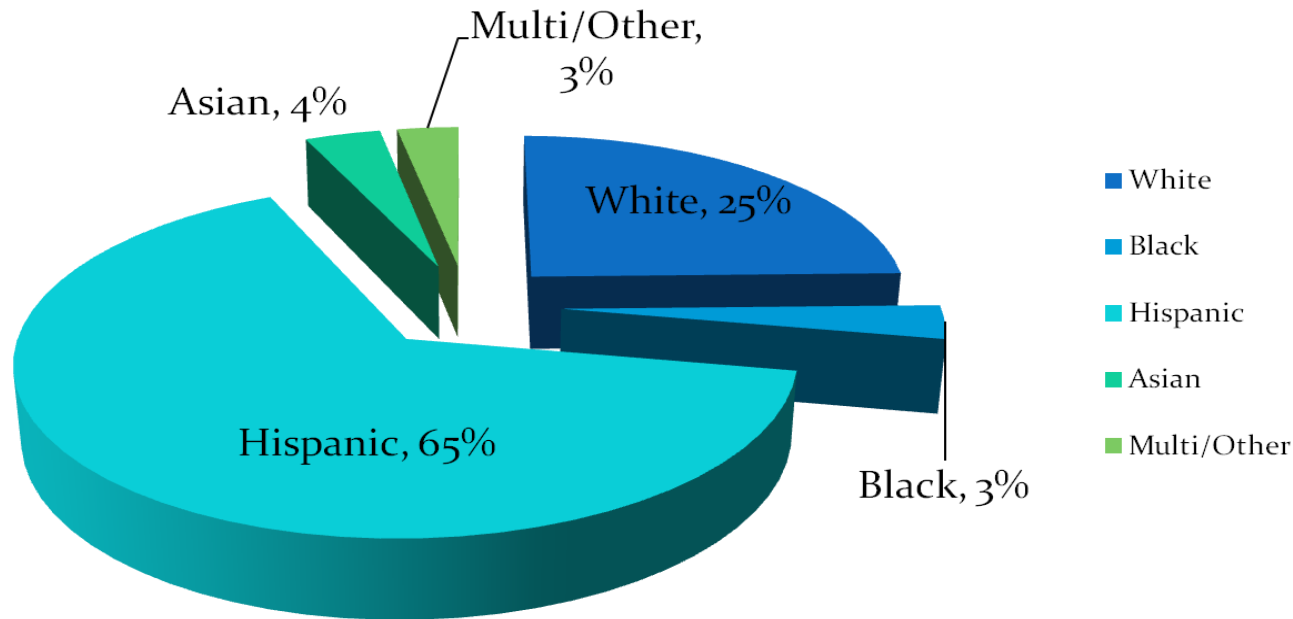




# Bensenville School Dist. 2

## Who are we?

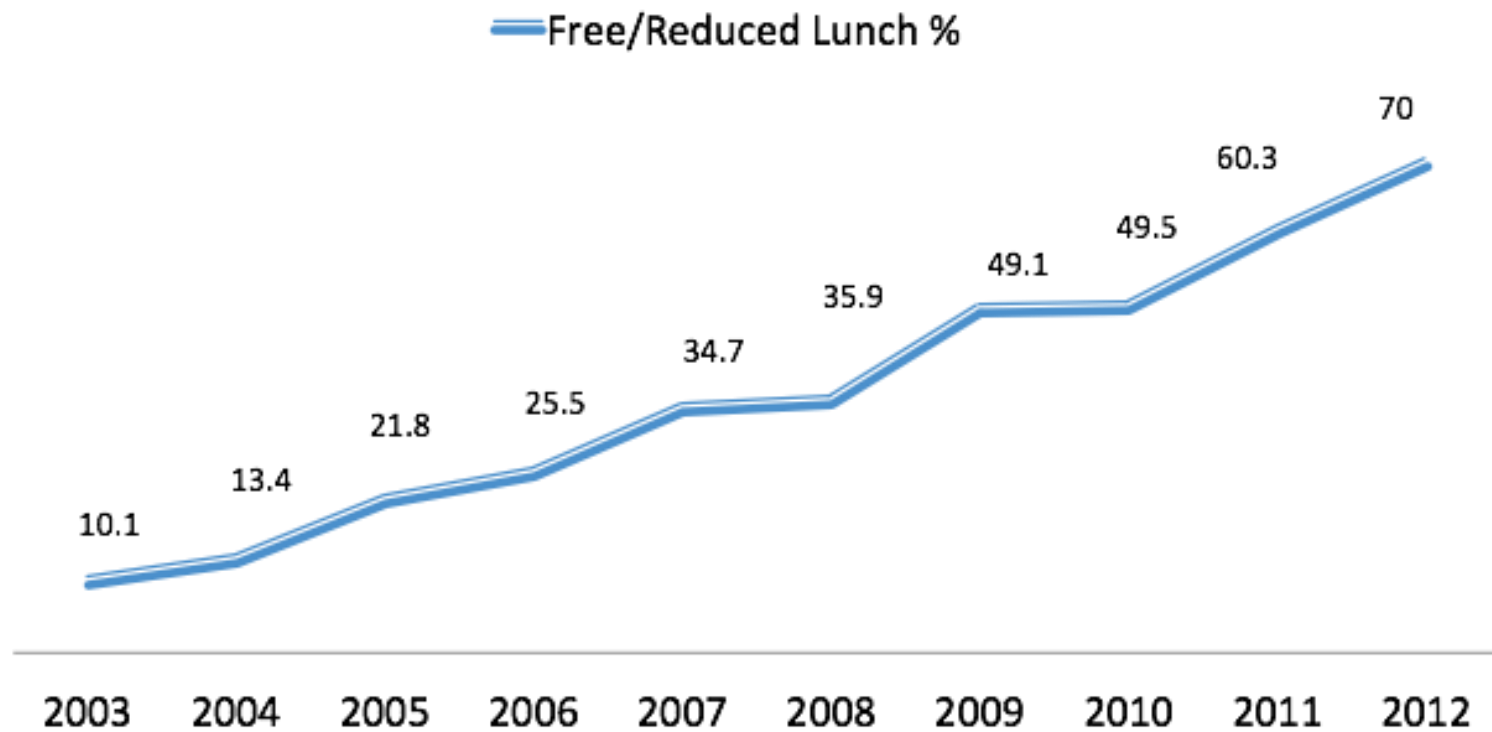
### Demographic Information



#### Other District Data:

- 67.4% Free and Reduced
- 50% Increase in # of Children entering Pre-School with EI services over past 10 years.
- Slot Gap Analysis reported 642 B-5 year olds (200% poverty)
- Linguistic Isolation

# Urgency for Change



# Community School Definition

A Community School is both a place and a set of partnerships between the school and other community resources. It's focus on academics, health and social services, youth, and community development and community engagement leads to improved student learning, stronger families and healthier communities.

*Coalition for Community Schools 2018*

 <p><i>Engaging Instruction</i></p>	 <p><i>Expanded Learning Opportunities</i></p>	 <p><i>Health and Social Support</i></p>
 <p><i>Community Engagement</i></p>	 <p><i>College and Career Ready</i></p>	 <p><i>Early Childhood Development</i></p>
 <p><i>Family Engagement</i></p>	 <p><i>Youth Development Activities</i></p>	 <p><i>Strategic Alignment</i></p>

# Community School Model Video

<https://www.youtube.com/watch?v=nLt-FC3awuo&list=UUfjpuPCz1affRXHA3Z5kMCg#action=share>

# So What.....

## **Why Community Schools?**

Community school leaders believe learning needs to happen before, during, and after the regular school day. They strive to leverage key partnerships to provide enhanced services and supports that meet the needs of all families. Community schools often provide expanded learning opportunities before and after school and during the summer; adult education and parent engagement classes and workshops; and access to health, dental, and mental health services.

Central to most community school models is coordination of student and family services and integration of these services with the core instructional program.



# Community School Research

- Improved scores in reading and math
  - 150 schools in Chicago Community Schools Initiative
  - New York
- Improved Attendance
  - Pennsylvania
- Improved Parent Involvement

# Birth to Third Grade Continuum



# YWCA Metropolitan Chicago

**The YWCA Metropolitan Chicago is a 140 year old trusted community resource whose mission is to eliminating racism, empowering women and promoting peace, justice, freedom and dignity for all.**

Serving more than **200,000** women and families in neighborhoods all across Chicago and the suburbs.

Early Childhood Services include: Child Care Resource & Referral, Early Head Start, Prevention Initiative Home Visiting, Young Parents program, Economic Empowerment, and Sexual Violence and Support Services.



# Early Childhood Development



## Overarching Problem

Not all children in Bensenville are not ready for Kindergarten

WHY????

Cross Sector approach

- ✓ Birth to 3 Home Visiting
- ✓ Head Start
- ✓ Preschool for All
- ✓ Child Care



shutterstock - 100321100

# The Hook Up.....



## Starts with a Simple Conversation Community Systems Approach

Collected Data	→	2013 1,387 children in Bensenville under 5
• Understanding of Community Needs.	→	410 living in poverty 80 PFA slots 34 Head Start slots
• System Scan	→	2 Licensed Child Care
• Partnership Integration		149 slots 87 Children CCAP

A simple conversation & a vision to increase quality early childhood experiences turned in to a highly functioning early childhood collaboration BELS.

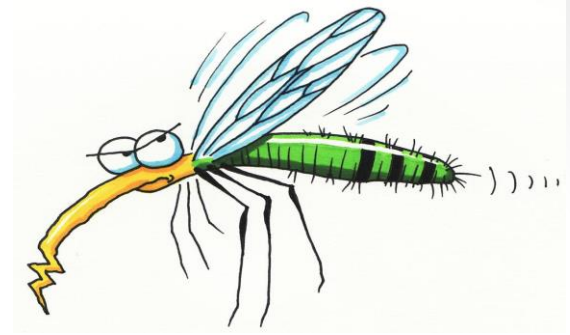


**Bensenville Early Learning  
Supporters**

# Strategies to increase the E. C. infrastructure

Increase Screening	30%
Increase CCAP Utilization	32%
Increase slots in programs	34%
Increase Quality –ExceleRate	34%
Increase Partnerships	83%
Organic Outreach	2 Referrals, 34 meals 39 Kids





***I am rather like a  
mosquito in a nudist camp;  
I know what I ought to do,  
but I don't know where to  
begin.***

- Stephen Bayne,

Episcopal Bishop



# Strategy 1: Define the Problem

- Looks different for every community
  - Single school initiative versus district-wide
- Ask the right questions
  - Example - Homeless question
- Collect Accurate information, using different sources
  - Example - YWCA

# Strategy 2: Collect Data

## Collect as much data as possible

- District Data
  - Phone calls (Kindergarten data)
  - Focus groups (3 categories)
- Research Best Practice
  - Heckman
  - Community school Model data
- Community Data
  - Create a collaboration (BELS)

# Strategy 3:

## Complete a Systems Scan

- What Exists already?
  - Bensenville
    - COD classes expanded to Spanish Literacy
    - Food trucks expanded to three school collaboration (bi-weekly distribution)
    - small Birth to three partners expanded to 30
    - Medical supports expanded to Welcome Center
- Community Assessment ([link](#))

# Stratgy 4: Analyze Data

## BSD2 Findings

- Low literacy
- Food Insecurity
- Isolation
- Medical/Mental health needs
- Need for Culturally Relevant Programming

***After the data collection process  
Now What?***



# Strategy 5: Partnership Identification

## Who does what best (External)

- Partner Survey
- Ask about long term goals of all partner
  - May have multiple partners providing the same service
- Discuss duplication of services
- Draft a formal agreement (MOU's)

# Strategy 6: Implementation



- Build consensus with Community leaders
- Look for resources from places looking for users
- Support teachers

# Synthesize the data

Plan: Define the problem  
Analyze the situation  
Collect the Data  
Develop solutions

Do: Implementation.  
(small scale)

Check: Did your implemented  
solution work?

Act: What do I do next?  
This depends on the outcome of  
the check.





# Challenges

- One sided partnership due to unclear role assignment
- Duplication of services
- Meet to Meet
- Barriers for families (immigration, documentation)
- Change/Space issues
- Collect the right data
- Working in Silos

# Where are we now?

## Where we are now

- Increased funding
- New Center
- 30 partnerships
- Internal struggles

## Where we want to be

- Sustainable
- Broaden community Reach
- Improve quality of partnerships.

# Community Checklist

- <http://www.communityschools.org/assets/1/AssetManager/csassessment.pdf>
- Needs to be a conversation.
  - All Community Stakeholders
    - Health Department
    - Local Municipality
    - Local Non-profits
    - Park District
    - Local Library

# Partnership Growth

## 2014

- YWCA
- Health Department

## 2018

- YWCA Metropolitan Chicago
- Dupage Federation
- Dupage Foundation
- DCHD
- Frida Kahlo
- Local Gov't entities
- Head Start
- 4 local non-profits
- College of DuPage

# In Conclusion.....

## Relationships, Relationships, Relationships

*“When the school sees itself as the hub of its community — and perhaps believes that it is the community’s most important institution—it sets itself up as a didactic outsider. A comprehensive community school, however, sees itself as a node in a complex web of key relationships within a community; it also acknowledges its power and uses that power to mobilize groups, provide services, and educate citizens”*

# Contact Information

**Dr. Jim Stelter**

**Bensenville School District 2**

**[jstelter@bsd2.org](mailto:jstelter@bsd2.org)**

**Christy Poli, LCSW, I/ECMH-C**

**Bensenville School District 2**

**[cpoli@bsd2.org](mailto:cpoli@bsd2.org)**

**Marianne Pokorny, LPC.**

**YWCA**

**[Marianne.pokorny@ywcachicago.org](mailto:Marianne.pokorny@ywcachicago.org)**